

Memo



To: Mr. Roger Clouse, PSEG
Mr. Joshua Broad, PSEG
From: Mr. Tyler Schott, PE, GEI Consultants, Inc.
CC: Ria Canagon, PSEG
Erin Gorman, PSEG
Date: December 8, 2017
Re: CCR Surface Impoundment Removal Documentation
PSEG Hudson Generating Station

GEI Consultants, Inc. (GEI) has prepared this memorandum to document the removal of Coal Combustion Residuals (CCR) from the CCR surface impoundments (ponds) at the PSEG Hudson Generating Station (the "Station" or "Hudson"). This document has been certified by a qualified Professional Engineer and shall be placed in the Station's operating record.

The Hudson Generating Station is a steam-electric generating facility that is owned by PSEG Power LLC and operated by PSEG Fossil LLC (PSEG). Hudson is located north of the intersection of Duffield and Van Keuren Avenues in Jersey City, New Jersey. The Station is on the eastern bank of the Hackensack River and is involved in the steam electric generation industry, (SIC Code 4911). The Station historically utilized three coal combustion residuals impoundments including a 6-acre North Fly Ash Pond, a 6.6-acre South Fly Ash Pond and a 3-acre Bottom Ash Pond. The Bottom Ash Pond was put into service shortly after the two generating units were completed in 1968. The North and South Fly Ash Ponds were constructed in 1981. The ponds historically received both fly ash and boiler slag. Following publication of the CCR final rule on April 17, 2015, PSEG developed a plan to document the excavation and removal of all CCR from the surface impoundments.

A Site Location Map is provided as Figure 1 and a Site Plan depicting the historical CCR surface impoundment locations are provided as Figures 2 and 3.

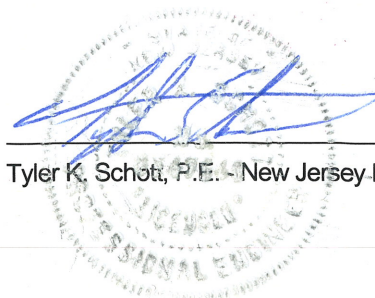
PSEG posted their Notice of Intent (NOI) to initiate closure of the surface impoundment on their CCR Rule Compliance Data and Information website on November 6, 2015. PSEG completed CCR removal activities on November 16, 2017. A New Jersey Licensed Professional Engineer (Tyler K. Schott, NJ PE #24GE04794800) observed and documented the removal of CCR at the facility on a weekly basis from March 2, 2017 through November 16, 2017.

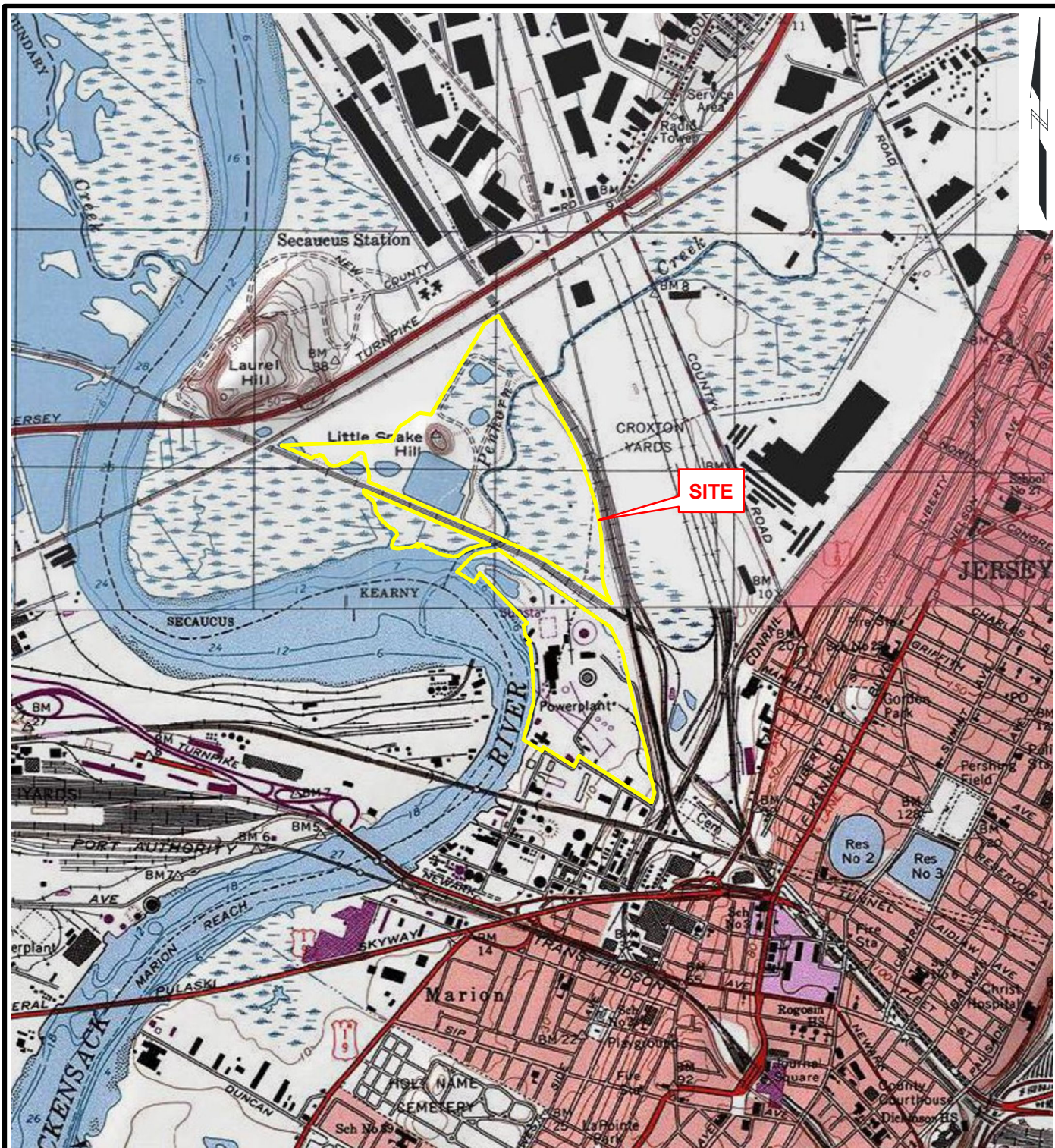
The CCR was removed from the surface impoundments and beneficially reused. The soil was properly disposed of in accordance with state regulations.

Professional Engineer Certification

I certify that based on the findings of the above-listed site observations and photo documentation that all CCR has been removed from the North, and South Fly Ash and Bottom Ash Ponds at the Hudson Generating Station.

Seal and Signature

A circular professional engineer seal for Tyler K. Schott, P.E., New Jersey, License No. 24GE04794800. The seal is partially obscured by a blue ink signature. To the right of the signature, the date "12/8/2017" is handwritten in blue ink.
Tyler K. Schott, P.E. - New Jersey P.E. #24GE04794800



SOURCE:

1. USGS TOPOGRAPHIC MAP ACCESSED
VIA ARCGISONLINE.COM

0 2,000 4,000



SCALE: 1" = 2000'

CCR Surface Impoundment Removal
Memorandum PSEG - Hudson
Jersey City, New Jersey

PSEG Power, LLC
New Jersey

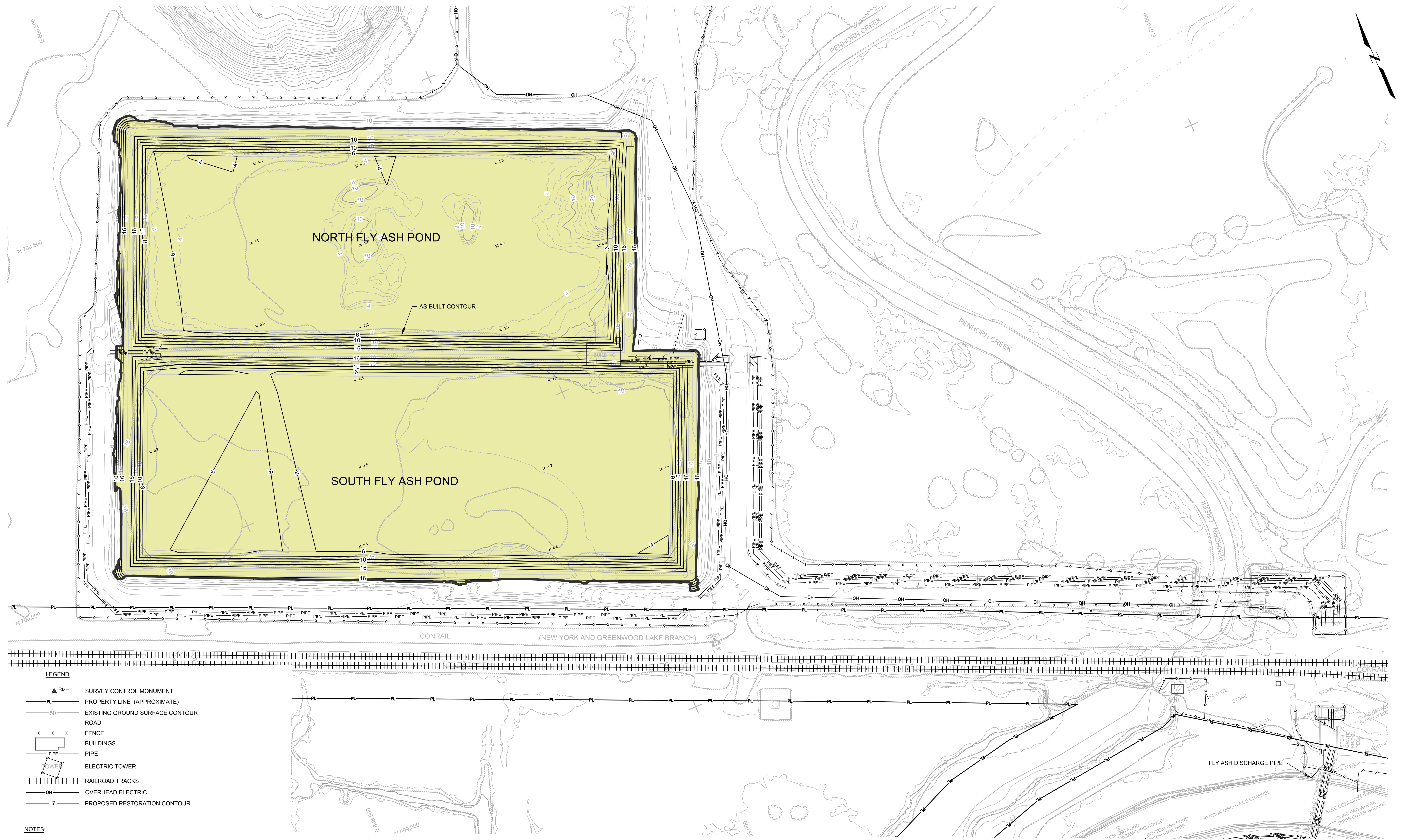


Project 1504710

SITE LOCATION MAP

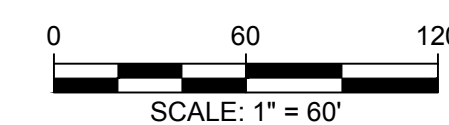
December 2017

Fig. 1



NOTES:

1. HORIZONTAL DATUM BASED ON NEW JERSEY STATE PLANE COORDINATES, NAD 83.
2. VERTICAL DATUM BASED ON NAVD 88.
3. SITE CONTOURS BASED ON HACKENSACK MEADOWLANDS LIDAR DATASET FROM APRIL 11, 2014.
4. FULL TONE AS-BUILT CONTOURS ARE BASED ON AS-BUILT SURVEY DATA FROM HUDSON GENERATING STATION, WASTE WATER TREATMENT SYSTEM, ASH PONDS, CONSTRUCTION OF SLURRY TRENCH CUTOFF BY WOODWARD-CLYDE CONSULTANTS DATED 1982.



CCR Surface Impoundment Removal Memorandum
PSEG - Hudson
Jersey City, New Jersey

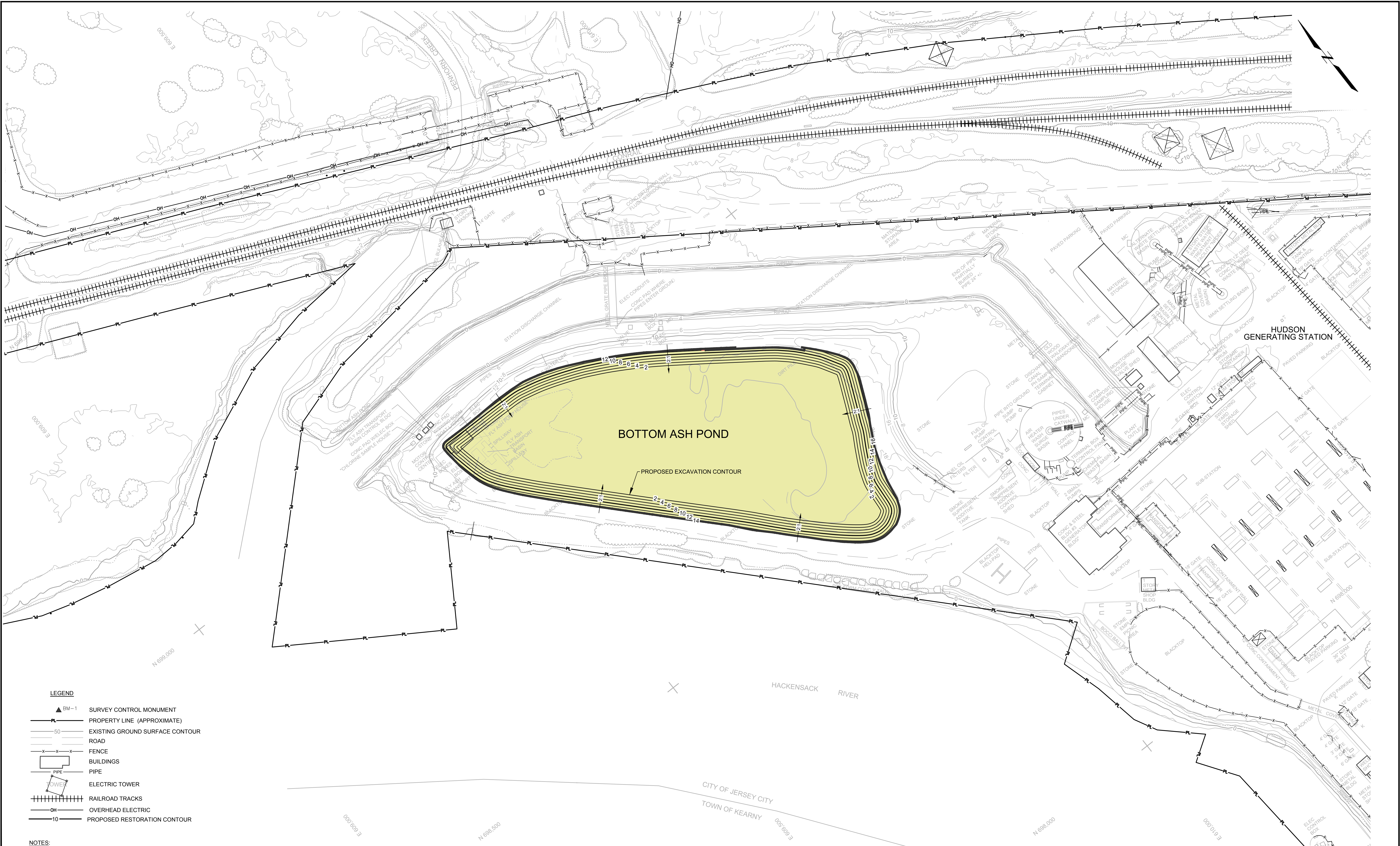
PSEG Power, LLC
New Jersey



Project 1504710

CCR IMPOUNDMENT
FOOTPRINT AND INITIAL
CONDITIONS PLAN - NORTH
AND SOUTH FLY ASH PONDS

December 2017

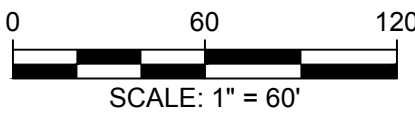


LEGEND

- ▲ BM-1 SURVEY CONTROL MONUMENT
- PL — PROPERTY LINE (APPROXIMATE)
- 50 — EXISTING GROUND SURFACE CONTOUR
- ROAD
- X — FENCE
- BUILDINGS
- PIPE
- TOWER — ELECTRIC TOWER
- RAILROAD TRACKS
- OH — OVERHEAD ELECTRIC
- 10 — PROPOSED RESTORATION CONTOUR

NOTES:

1. HORIZONTAL DATUM BASED ON NEW JERSEY STATE PLANE COORDINATES, NAD 83.
2. VERTICAL DATUM BASED ON NAVD 88.
3. SITE CONTOURS BASED ON HACKENSACK MEADOWLANDS LIDAR DATASET FROM APRIL 11, 2014.



CCR Surface Impoundment Removal Memorandum PSEG - Hudson Jersey City, New Jersey PSEG Power, LLC New Jersey	 Project 1504710 December 2017	CCR IMPOUNDMENT FOOTPRINT AND INITIAL CONDITIONS PLAN - BOTTOM ASH POND Fig. 3
---	--------------------------------------	--