

Memo



To: Mr. James Pfennigwerth, PSEG
From: Mr. Tyler Schott, PE, GEI Consultants, Inc.
CC: Ria Canagon, PSEG
Erin Gorman, PSEG
Mark Schwartzkopf, PSEG
Date: March 23, 2017
Re: CCR Surface Impoundment Removal Documentation
PSEG Mercer Generating Station

GEI Consultants, Inc. (GEI) has prepared this memorandum to document the removal of Coal Combustion Residuals (CCR) from the CCR surface impoundments (ponds) at the PSEG Mercer Generating Station (the "Station" or "Mercer"). This document has been certified by a qualified Professional Engineer and shall be placed in the Station's operating record.

The Mercer Generating Station is a steam-electric generating facility that is owned by PSEG Power LLC and operated by PSEG Fossil LLC (PSEG). Mercer is located at 2512 Lambertson Road in Hamilton Township, New Jersey. The Station is on the eastern bank of the Delaware River and is involved in the steam electric generation industry, (SIC Code 4911). The Station historically utilized two fly ash ponds including a 10-acre North Fly Ash Pond and a 6-acre South Fly Ash Pond. Both ponds were constructed under the original station design and were placed into service with the start-up of the plant in 1960. The ponds historically received both fly ash and boiler slag. Following publication of the CCR final rule on April 17, 2015, PSEG developed a plan to document the excavation and removal of all CCR from the surface impoundments.

A Site Location Map is provided as Figure 1 and a Site Plan depicting the historical CCR surface impoundment locations is provided as Figure 2.

PSEG posted their Notice of Intent (NOI) to initiate closure of the surface impoundment on their CCR Rule Compliance Data and Information website on November 6, 2015. PSEG completed CCR removal activities on October 19, 2016. A New Jersey Licensed Professional Engineer (Tyler K. Schott, NJ PE #24GE04794800) observed and documented the removal of CCR at the facility on the following dates:

- February 3, 2016;
- April 21, 2016;
- May 27, 2016;
- September 22, 2016;
- October 12, 2016; and
- October 19, 2016.

The CCR was removed from the surface impoundments and beneficially reused. The soil was properly disposed of in accordance with state regulations.

Professional Engineer Certification

I certify that based on the findings of the above-listed site observations, that all CCR has been removed from the North and South Fly Ash Ponds at the Mercer Generating Station.

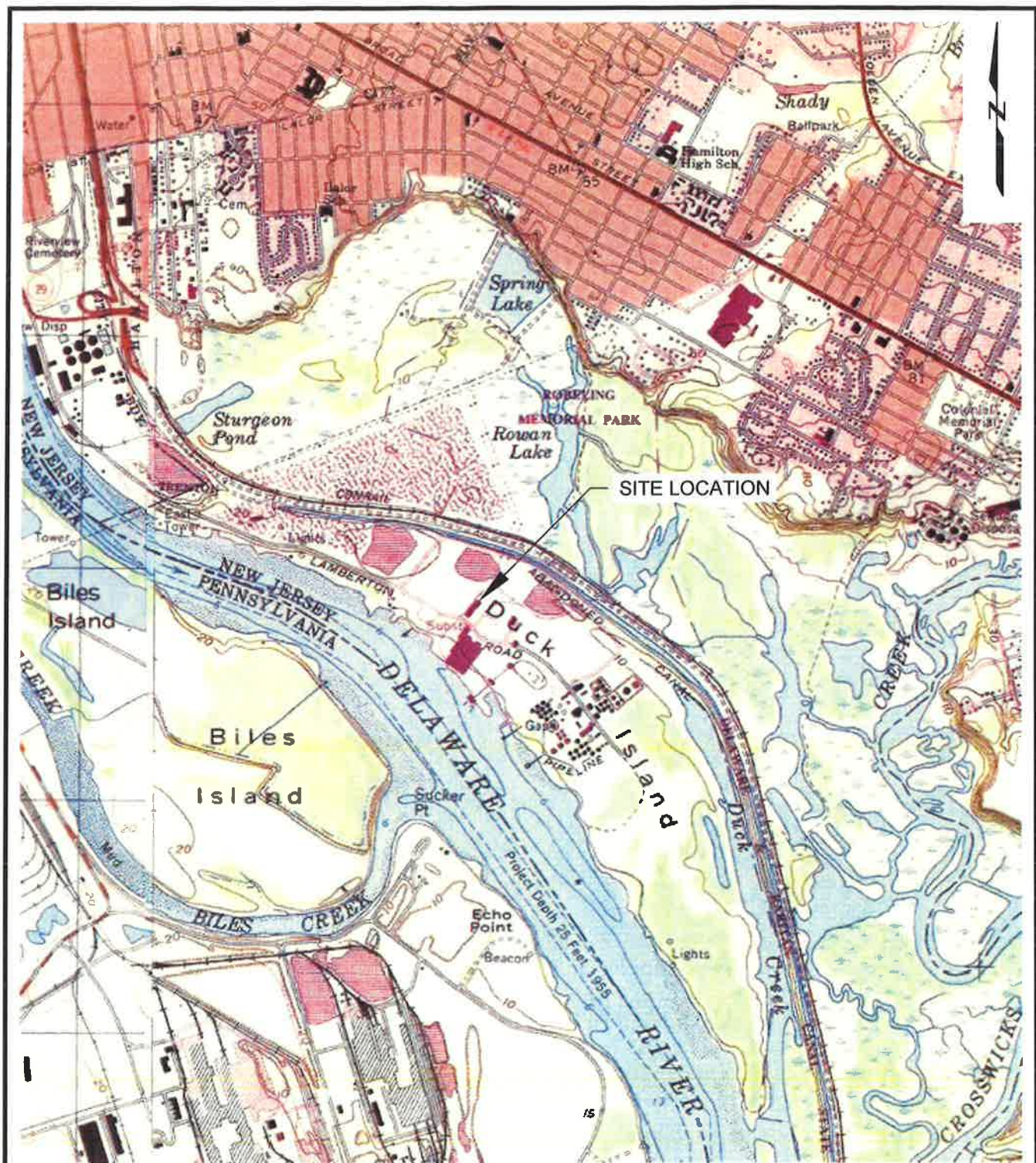
Seal and Signature

A handwritten signature in blue ink, appearing to read 'Tyler K. Schott', followed by the date '3/23/2017' written in the same ink.

Tyler K. Schott, P.E. - New Jersey P.E. #24GE04794800

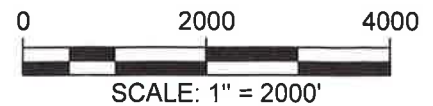
TKS:lsf

H:\WPROC\Project\PSEG\Mercer CCR Impound Closure Certification Memo.docx

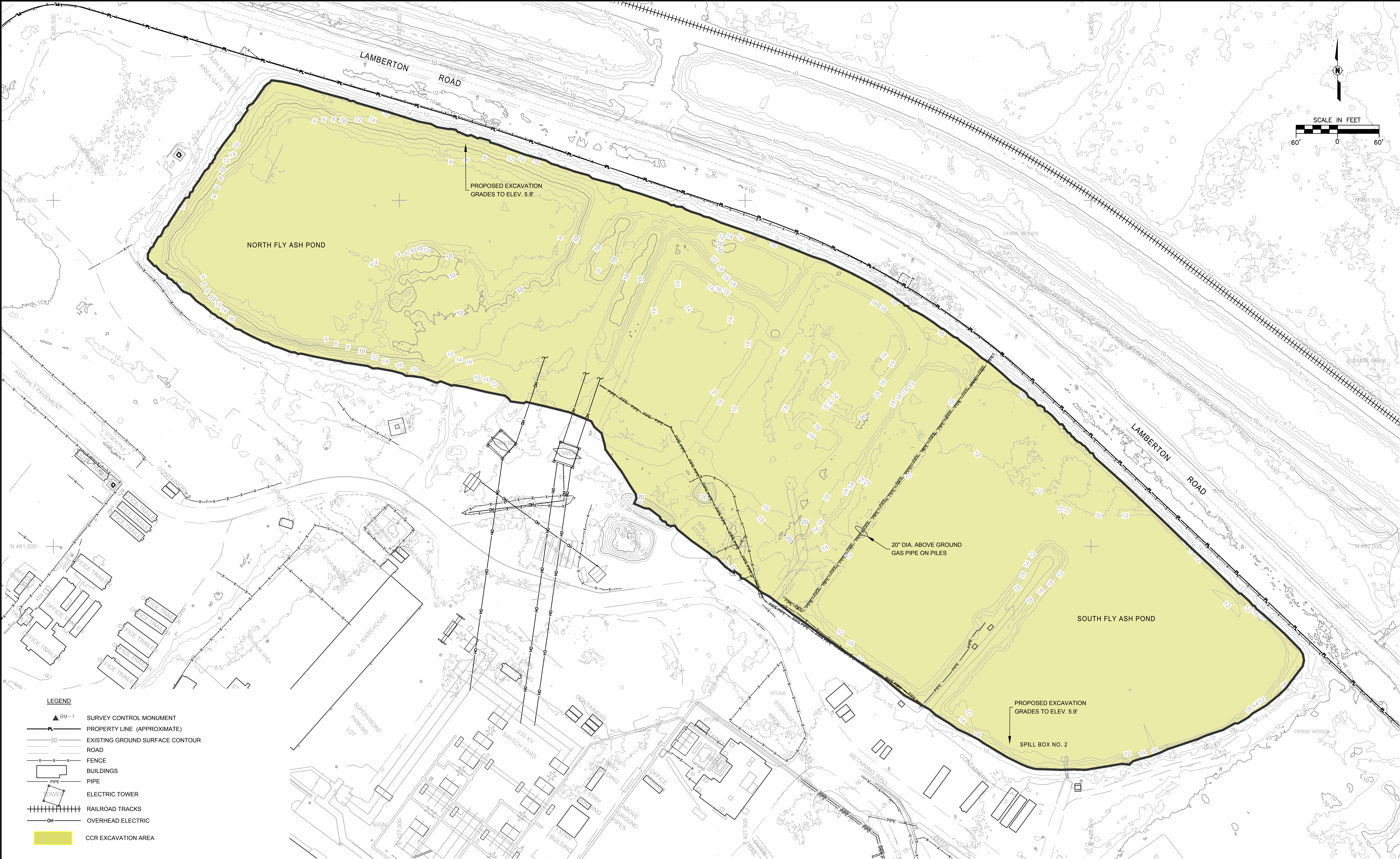


SOURCE:

1. USGS 7.5 Minutes Series Topographic Maps of Trenton, NJ, 1977.



<p>Mercer Generating Station North & South Fly Ash Ponds</p>	<p>GEI Consultants</p>	<p>SITE LOCATION PLAN</p>
<p>PSEG Services Corporation Newark, New Jersey</p>	<p>Project 1504710</p>	<p>March 2017 Fig. 1</p>



- LEGEND**
- ▲ BM - 1 SURVEY CONTROL MONUMENT
 - PL — PROPERTY LINE (APPROXIMATE)
 - 50 — EXISTING GROUND SURFACE CONTOUR
 - ROAD — ROAD
 - X — FENCE
 - BUILDINGS — BUILDINGS
 - PIPE — PIPE
 - TOWER — ELECTRIC TOWER
 - RAILROAD TRACKS — RAILROAD TRACKS
 - OH — OVERHEAD ELECTRIC
 - CCR EXCAVATION AREA

- NOTES:**
- HORIZONTAL DATUM BASED ON NEW JERSEY STATE PLANE COORDINATES, NAD 83.
 - VERTICAL DATUM BASED ON NAVD 88.
 - SITE CONTOURS BASED ON USGS LIDAR SURVEY FROM APRIL 2009. THE DATA WAS OBTAINED FROM THE NEW JERSEY OFFICE OF INFORMATION TECHNOLOGY, OFFICE OF GEOGRAPHIC INFORMATION SYSTEMS.

Attention:				
0 1"				
If this scale bar does not measure 1" then drawing is not original scale.				
0	X	X	X	
NO.	DATE	ISSUE/REVISION	APP	

Designed: TKS
Checked: TKS
Drawn: SX
Submittal Date: 3/3/2017



PSEG SERVICES CORPORATION
NEWARK, NEW JERSEY

GEI Project 1504710

MERCER GENERATING STATION
NORTH & SOUTH FLY ASH PONDS

SITE PLAN

DWG. NO.
2
SHEET NO.
2